



NOVEMBER 7-9, 2019

Xiaoyue Ma

Research Biostatistician II

Weill Cornell Medicine

Division of Biostatistics and Epidemiology, Department of Healthcare Policy & Research
402 E. 67th Street / C2 – LA0001B, New York, NY 10065

T: (646) 962-8029

xim2008@med.cornell.edu





Unlocking Data to Drive Your Business

We offer data science consulting and advisory services, infrastructure setup and training in open source software for organizations looking to drive business value from their data assets.

[Meet Our Team](#) [Contact Us](#)

DATA SCIENCE SOLUTIONS

We help clients create meaning out of their data, transform information into insights, and drive value to address critical business issues and goals.

[Our Solutions](#)

INFRASTRUCTURE SETUP

We offer full-scale procurement, installation, support and maintenance for open source and commercial data science products.

[Installation Services](#)

PROFESSIONAL TRAINING

From courses in R, Python, SQL and Git, to machine learning and industry-specific modeling, our courses can be modified to fit your organization's needs.

[Explore Courses](#)



Jared Lander

[About](#) [Services](#) [Talks](#) [Projects](#) [Contact](#) [R for Everyone](#) [Data](#)

About

Jared Lander is the Chief Data Scientist of [Lander Analytics](#) a data science consultancy based in New York City. The Organizer of the [New York Open Statistical Programming Meetup](#) and the [New York R Conference](#) and an Adjunct Professor of Statistics at [Columbia University](#). With a masters from [Columbia University](#) in statistics and a bachelors from [Muhlenberg College](#) in mathematics, he has experience in both academic research and industry. His work for both large and small organizations ranges from music and fund raising to finance and humanitarian relief efforts.

He specializes in data management, multilevel models, machine learning, generalized linear models, data management and statistical computing. He is the author of [R for Everyone](#), [Advanced Analytics and Graphics](#), a book about R Programming geared toward Data Scientists and Non-Statisticians alike and is creating a course on gimnet with [DataCamp](#).

Get the video

For a sample of previous work please see the [Projects](#) page and for a selection of talks he as delivered please visit the [Talks](#) page.

[Curriculum Vitae](#)

25 Speakers

3-day Agenda

Talk Videos



NOVEMBER 8, 2019

8:00 AM - 8:50 AM	Breakfast & Open Registration
8:50 AM - 9:00 AM	Opening Remarks
9:00 AM - 9:20 AM	R Cloud and Google – Practical Tools for Data Science, NLP, API, and Maps Refael Lav
9:25 AM - 9:45 AM	Pagedown: in HTML We Trust Samantha Tyner
9:50 AM - 10:10 AM	Optimizing Topic Models for Classification Tasks Tommy Jones
10:10 AM - 10:40 AM	Break & Networking
10:40 AM - 11:00 AM	funneljoin: Defining a Tidy Grammar of Funnels in R Emily Robinson
11:05 AM - 11:25 AM	Raising Baby with R Jared P. Lander
11:30 AM - 11:50 AM	R and Python Coexisting in the Same Development Environment Dan Chen
1:00 PM - 1:20 PM	Managing Your Cloud: Working with APIs Merck Vaisman
1:25 PM - 1:45 PM	Dashboarding Like a Boss Malorie Hughes
1:50 PM - 2:10 PM	Using NetworkD3 and R to Visualize and Explore Relationships in Data Ami Gates
2:10 PM - 2:40 PM	Break & Networking

Weill Cornell Medicine

#rstats #rstatsdc

@rstatsdc

THE SPEAKING AT

DCR

GEORGETOWN UNIVERSITY
WASHINGTON, DC
NOVEMBER 7-9, 2019



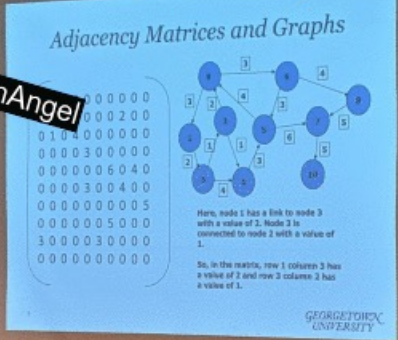
KIMBERLY KREISS
Federal Reserve Board

Tickets & more at <https://dc.rstats.ai/>
Mentions: @federalreserve @KimberlyKreiss

#rstats #rstatsdc

@DataDrivenAngel

Adjacency Matrices and Graphs



Here, node 1 has a link to node 3 with a value of 2. Node 3 is connected to node 2 with a value of 1.

So, in the matrix, row 1 column 3 has a value of 2 and row 3 column 2 has a value of 1.

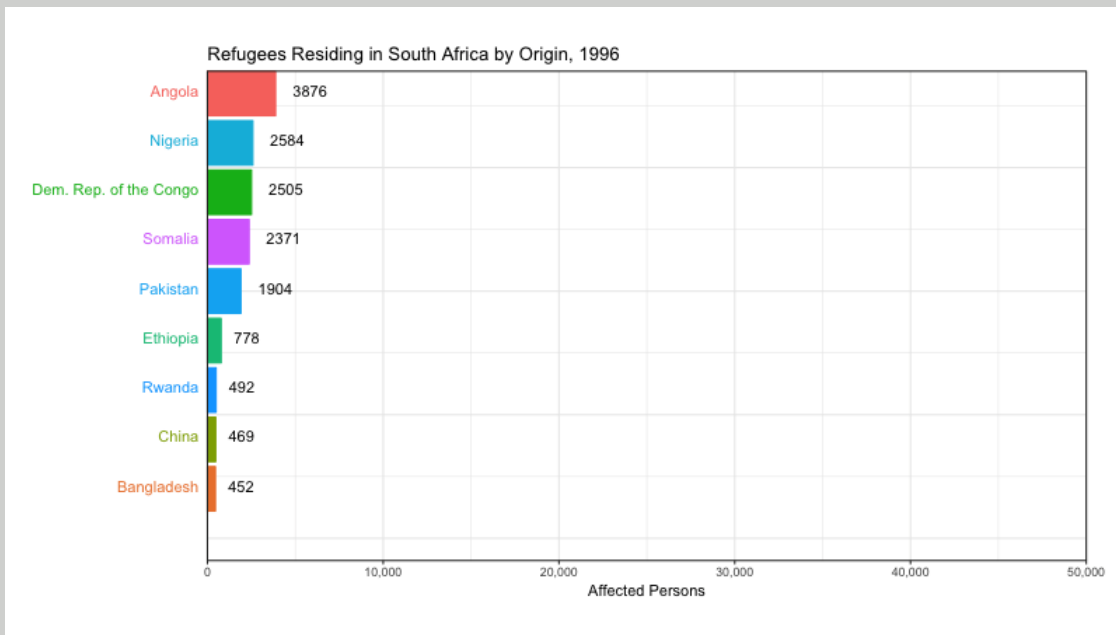
GEORGETOWN UNIVERSITY

Mentions: @jaredlander @DrGates309



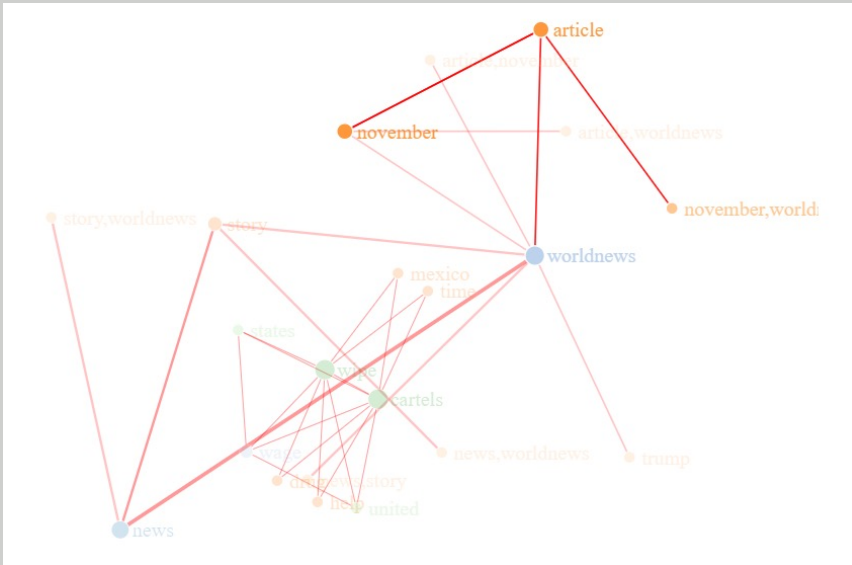
Animation for Dataviz in R

Stephanie Kirmer (<https://github.com/skirmer>)



Using NetworkD3 and R to Visualize and Explore Relationships in Data

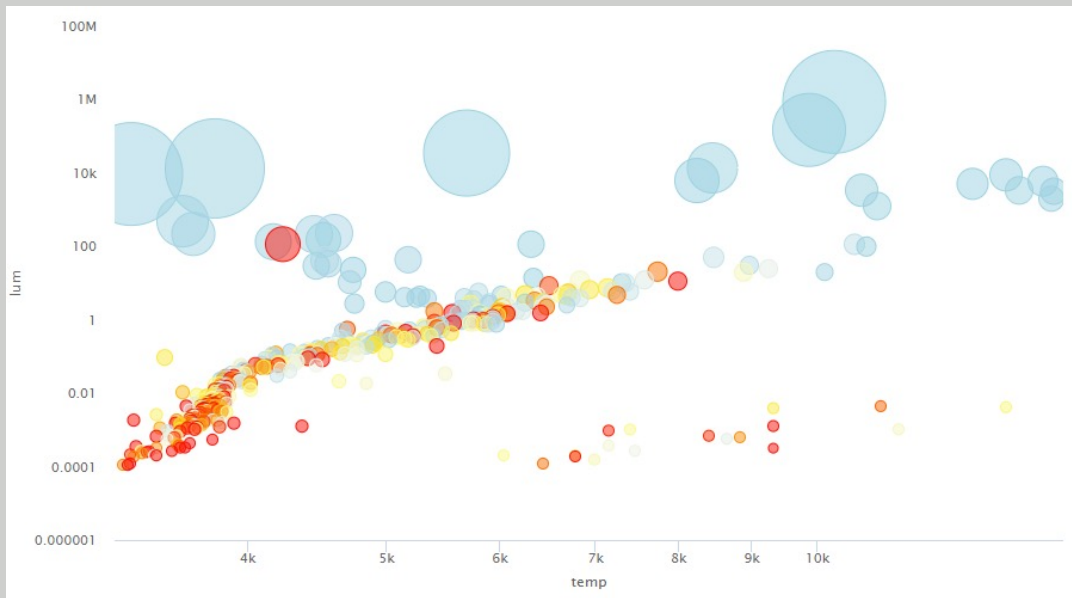
Ami Gates (<http://drgates.georgetown.domains/#home>)



Dashboard Like a Boss

Malorie Huges (<https://github.com/maloriejhughes>)

printr; stargazer; summarytools; DT; Highcharter



Optimizing Topic Models for Classification Tasks

Tommy Jones

(<https://www.youtube.com/watch?v=k6kCSzWigil>)

RBERT: Cutting Edge NLP in R

Jon Harmon

(<https://www.youtube.com/watch?v=1kV0fPDefBM>)





Weill Cornell Medicine